



# AUDAC

## Connections DW3020/4020

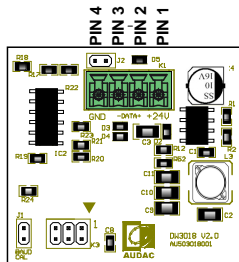
Pin	Signal	Conductor T-568B - Straight
Pin 1	+24V DC	Green - White
Pin 2	DATA +	Blue
Pin 3	DATA -	Blue - White
Pin 4	GND	Green

## ATTENTION

Only connect the DW3020/4020 wall panels to your matrix system when it's powered off

Brown and Orange pair should not be connected

Enkel aan te sluiten door een vakman  
Connections only to be made by professionals  
Seulement à brancher par un professionnel  
Nur anzuschließen von einem Fachmann



## JUMPER SETTINGS

J2 is a Bus-termination Jumper. It should only be placed when the wall panel is connected at the end of the communication line.  
(or when its the only connected thing)