



# CS55D

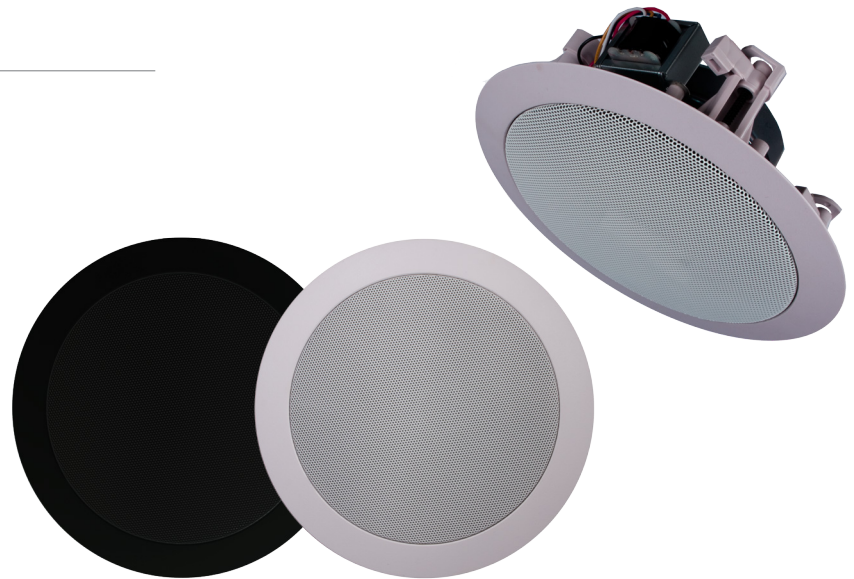
Dual cone 5 ¼" in-ceiling speaker

## ► Features

- High-quality ceiling loudspeaker
- 5 ¼" Dual cone driver
- Fast-con™ connections
- 16 Ohm impedance
- Wide 140° conical coverage
- Quick-fit installation system
- Paintable to blend-in

## ► Applications

- Hotels
- Restaurants & pubs
- Corporate offices
- Retail stores & warehouses
- Public buildings
- Airports & train stations
- ...



The CS series loudspeakers are high-quality in-ceiling loudspeakers, delivering exceptional sound quality and value for a wide variation of applications, ranging from paging and announcements to background music systems in a wide range of business applications, including hotels, restaurants and pubs, corporate offices, retail stores, etc.

The CS55D in-ceiling loudspeaker features a 5 ¼" dual cone driver with a continuous power handling of 10 Watt and a maximum power handling of 20 Watt. The dual-cone construction makes the CS55D the perfect match for a wide variation of general purpose indoor applications, ranging from paging and announcement systems to background music systems.

The 16 Ohms impedance allows connection of a large number of loudspeakers in a standard low impedance audio system (up to 4 speakers in parallel on a single 4 Ohm amplifier channel). Connections are made with Fast-con™, allowing fast and smooth connections. The mounting of the loudspeaker into the ceiling is achieved with a Quick-fix mechanism, offering a great installers convenience and lifetime stability.

The construction of the speakers' housing is made out of high-quality ABS, while the front is covered by a solid powder-coated steel grille. It comes available in different colours, while custom painting is possible for a total blending into any environment.

## ► Specifications

SYSTEM SPECIFICATIONS		
Speaker type	Dual cone	
Max. power	20 W	
RMS power	10 W	
Impedance	16 Ohm <i>8 Ohm / 100 Volt version also available (CS55)</i>	
Sensitivity (1W/1m)	93 dB	
Sound pressure (Max W/1m)	109 dB	
Frequency response (± 3 dB)	70 Hz - 14 kHz	
Frequency range (-10 dB)	55 Hz - 16 kHz	
Conical dispersion (1)	140°	
PRODUCT FEATURES		
Dimensions (Diameter x Depth)	Ø 202.5 x 67 mm	
Weight net	0.55 Kg	
Connection	Fast-con™ connections	
Drivers	Dual cone 5 ¼"	
Construction	High quality ABS housing	
Grill type	Finely perforated steel grill	
Cut-out measurement	Ø 165 mm	
Built-in depth	62 mm	
Mounting & handling	Quick-fit installation system (4-screw)	
Available colours	CS55/D	White (NCS S1000-N)
	CS55D/W	White (RAL9010)
SHIPPING & ORDERING		
Packaging	Cardboard box	
Shipping weight & volume	0.65 Kg - 0.0040 Cbm	
<small>(1) Half space (flush mounted in ceiling), average 100 Hz to 10 kHz at -6 dB</small>		
*AUDAC reserves the right to change specifications without notice: this is part of our policy to continuously improve our products.		

## ► Architects' and Engineers' Specifications

---

The ceiling mount loudspeaker shall be a dual-cone type equipped with a 5 ¼" low frequency driver. The speakers impedance shall measure 16 Ohms, allowing parallel connection of four speakers on a single 4 Ohm amplifier channel.

It shall have an RMS power handling of 10 Watt with a maximum power handling of 20 Watt and the frequency response ( $\pm 3$  dB) shall range from 70 Hz to 14 kHz. The sensitivity shall be 93 dB when measuring with an input signal of 1 Watt at a distance of 1 meter, while the maximum continuous sound pressure level shall be 109 dB. The nominal dispersion shall be a 140° conical coverage pattern at -6dB (average 100 Hz - 10 kHz).

Fast and smooth connection of the system shall be possible using a Fast-con™ connector.

The speakers frame shall be constructed in high quality ABS material which comes available in a white (RAL9010) colour and is fitted with a removable steel grill allowing custom painting to make it blend-in with any environment. Mounting of the speaker into the ceiling shall be possible using a 4-screw Quick-fix installation system.

The speaker shall have a diameter of 202.5 mm, a depth of 67 mm and the weight shall not exceed 0.55 kg. The speaker shall fit in a mounting hole with a cutout diameter of 165 mm and a build-in depth of 62 mm.

## ► Technical drawing

---

